

Graphene Male Dog Wrap

Feature/Function:

1. Super soft and breathable graphene fabric for inner;
2. High Tech. Graphene crotch Fabric: Graphene is advanced, environmentally friendly and healthy material. It is super absorbent and antibacterial. At the same time, the graphene material performs great in Antistatic, and keep your pet dry.
3. Visible Wetness :You can check at the first time whether you need to replace the diaper, as the honeycomb shape will appear when it is wet. You can do an interesting experiment to check whether the product you bought is genuine. Drop a drop of water on the inner fabric. If you see the water drop disappear, the shape of the honeycomb will appear. Congratulations! You have got a most fashionable and technological diaper for your dog.
4. Graphene Healthy Material :Biological body temperature stimulates far-infrared function, promotes blood microcirculation, accelerates metabolism, and effectively relaxes muscles. Keep your pet healthy. Meet, relieve fatigue and chronic pain, thereby can keep your pet calm and relax.
5. The 2nd layer is with super absorption microfiber towel inside .
6. Adjustable size with adhesive closure , easy to put on/off .
7. With elastic bands on sides to fit better on your pet's body.
8. Machine washable

AAA^{antibacterial}

Graphene Male Dog Wrap

Graphene Healthy Material



Authoritative detection



Honeycomb structure



Inhibition of bacteria



Product information

Brand: DogLemi

Name: Graphene Male Dog Wrap

Item NO: PD10056

Size: XS/S/M/L/XL/XXL

Color: GREY / BLACK

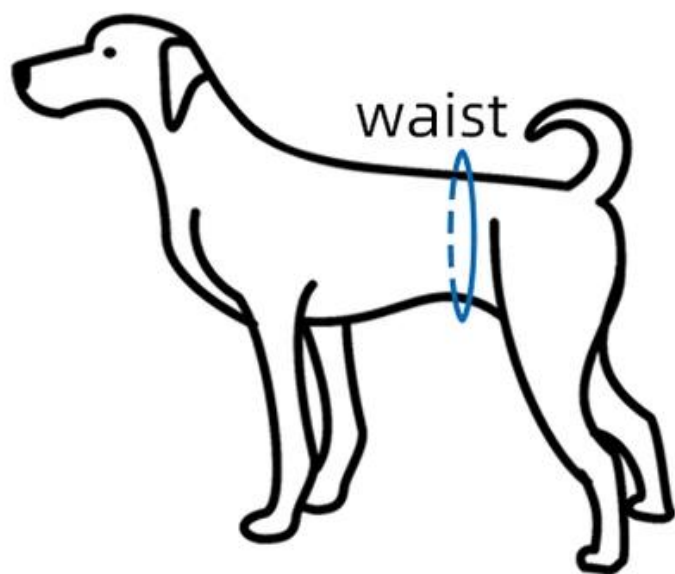
Material: Polyester fiber, recycled fiber, spandex



● GREY



● BLACK



Size	Waist(inch/cm)	Wide(inch/cm)
XS	9.4-12.6 / 24-32	4.1 / 10.5
S	11.8-14.2 / 30-38	5.9 / 15
M	15.4-18.9 / 39-48	7.5 / 19
L	20.5-23.6 / 52-60	8.7 / 22
XL	24.8-27.6 / 63-70	11.8 / 30
XXL	29.1-33.9 / 74-86	13.4 / 34



Details display

Graphene Healthy Material

Graphene is advanced,
environmentally friendly and healthy material.
It is super absorbtion and antibacterial.

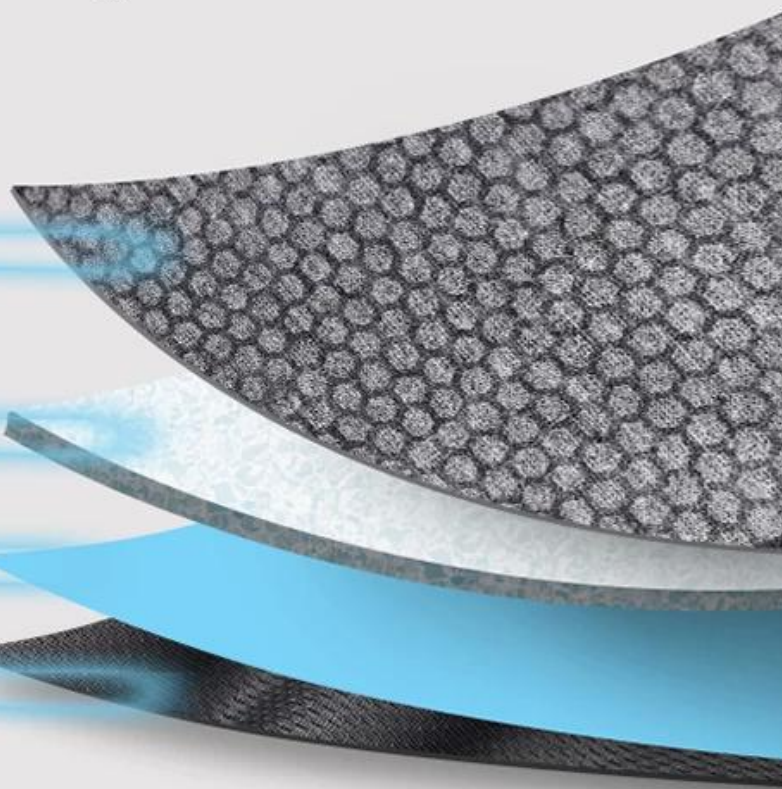


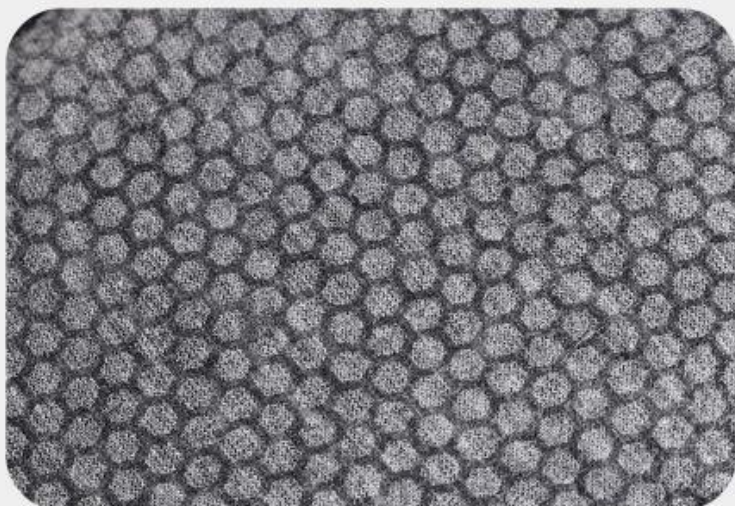
GRAPHENE ANTIBACTERIAL
LAYER (Crotch)

WATER ABSORPTION
TOWEL LAYER (crotch)

WATER PROOF COATING

BREATHABLE MESH SHELL





Graphene Healthy Material

Biological body temperature stimulates far-infrared function, promotes blood microcirculation, accelerates metabolism, and effectively relaxes muscles, keep your pet healthy .

01

/ Details

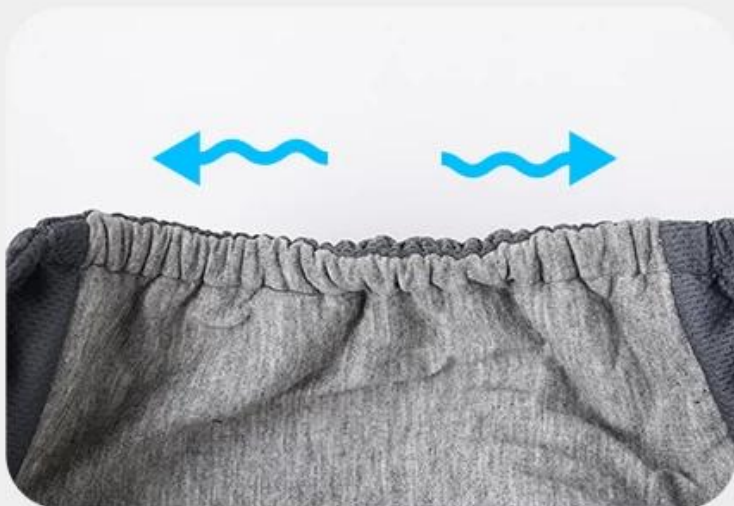
Strong water absorption

The 2nd layer is with super absorption microfiber towel inside .

02

/ Details





Elastic band design

Adjustable size with adhesive closure , easy to put on pets

03

/ Details

Breathable fabric

Super soft and breathable graphene fabric for inner.

04

/ Details





Model display





